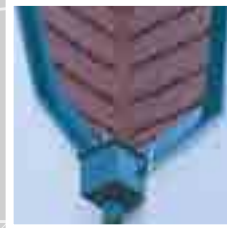




SIPHONS ABLÄUFE

327 x 164(185)

Ø 110/100/
90/75



255

490

HL Rain hoppers

17. Rainwater drainage

DN110
17



HL Rain hoppers

Basic information about design and installation

The drainage of roof rainwater into the sewer or a soakaway belongs to today's normal standard of modern buildings. In the best case the connection between the downpipe and the sewage pipe is a rain hopper.

We have assembled some suggestions for you for perfect design and realization:

▲ Rainwater downpipes should have a possibility for cleaning, maintenance and inspection at the junction to the horizontal pipe.

▲ If rainwater downpipes are connected to the sewer, they have to be secured by a stench trap (in cold regions frostproof), when stench may be expected.

▲ The maximum roof surface, which may be drained, is calculated on the basis of the capacity of the downpipes acc. EN12056-3 and a minimum rainfall quantity of 300 l / (s x ha).

▲ Extract of ÖNORM B2501
Rainwater downpipes, which are installed on the outer side of the building, must be

connected to rain hoppers. The rain hoppers may be seen as the best cleaning access.

Relevant standards/directives

ÖNorm B2501 Drainage of buildings
DIN 1986-100 Drainage systems for buildings and estates
EN 12056 Gravity drainage systems inside of buildings

Drain capacity: 11 l/s:
more than 50% higher
capacity!



Cover and flap: with
pre-formed gaskets - to
reduce uprising of smell
from the sewer



Connection of downpipe:
possible up to diameter
120mm



Leaf catcher: Bigger and
with overflow-function;
if the basket is full of
leaves, the middle pipe
cares for a minimum
drainage



Outlet: Connection DN110
and DN125 in one piece



New handle: for easy
opening



Pipe cover: excentric
and horizontal stepless
adjustment; height 50mm,
to cover dilatations of the
downpipe



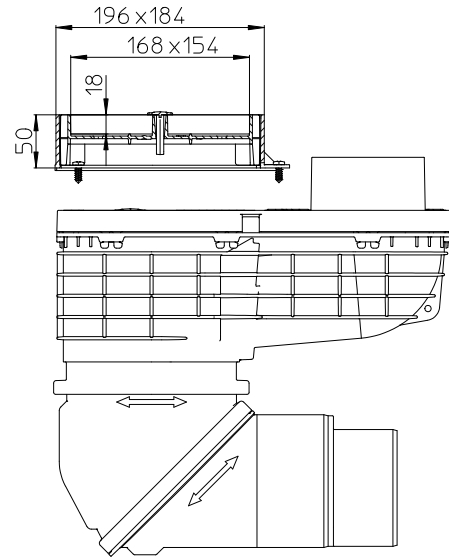
HL Rain hopper - HL600NHO

With curtain walls the downpipe very often is hidden between the brick wall and the curtain facade. In this case a normal rain hopper may not be used, as the opening of the lid no longer is possible. Beside of that there has to be a watertight connection between downpipe and rain hopper. We have got the solution: HL600NHO! With all advantages of the new rain hopper HL600N, but with a watertight socket connection DN110!



HL rain hoppers - HL601i The perfect extension for every kind of surface

The accessory HL601i (like individual) creates your individual pavement design around the house



HL rain hoppers – HL600N Installation instructions



1. Place rain hopper



2. Chose and insert the right pipe cover



3. Connect to the down pipe



4. Adjust angle to the sewer



5. Connect to sewer
DN110 - directly
DN125 - Cut with a saw



6. Ready

HL Rain hoppers - HL600N - Maintenance / cleaning



1. Contamination by e.g. leafs



2. Open lid



3. Empty leaf catcher

HL Rain hoppers – Products – Data

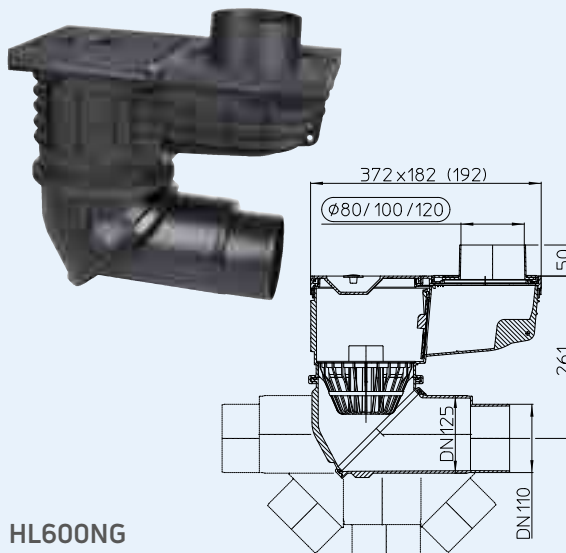
HL600N High capacity rain hopper with flexible ball joint

HL600NG Rain hopper like HL600N, but with visible parts made of cast iron

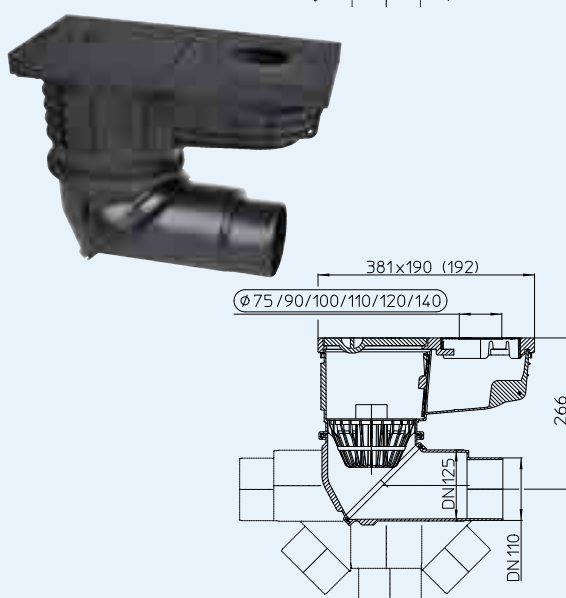
Data

Capacity	DN100: 10l/s DN125: 11l/s
Material	HL600N: PP HL600NG: PP/Guss
Inlet	Pipe joints DN80, DN100, DN120
Outlet	DN110 or DN125, horizontally and vertically adjustable from 0° to 90°
Trap	Frost proofed flap with rubber gasket
Standard	DIN 12056, Önorm B 2501
Recommended for	Connection downpipe to sewer with inspection possibility
Including	Leaf catcher with overflow, with pipe joints for downpipes Ø 80, 100, 120 and lid with rubber gasket
Add. information	Suitable for outdoor

HL600N



HL600NG



HL600N

HL0600N.1E



HL600NG

HL0600N.11E



HL0600N.2E



HL0600N.4E



HL0600N.3E

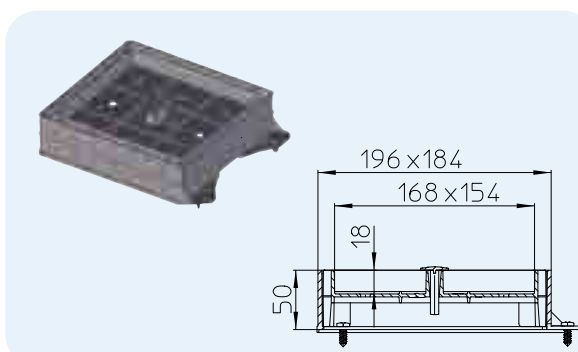


HL-No	Dimension	Surface	Weight	EAN	Piece/package
600N	DN110/125	PP	1627 g	+044122	1
600NG	DN110/125	Guss	8800 g	+044696	1

HL601i Extension for individual pavement styling

Data

Material	PP
Height	5 cm
Recomm. for	Filling of gravel, tiles stones...to style your individual pavement around the house. Equipped with lid for easy cleaning and maintenance



HL-No	Dimension	Weight	EAN	Piece/package
601i	196x184 mm	328 g	+044191	1

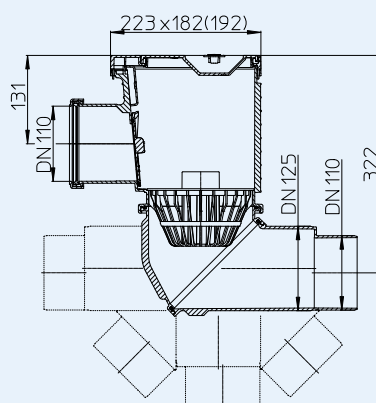
HL600NHO Rain hopper with horizontal inlet for curtain walls

HL600NGHO Rain hopper like HL600NHO, but with visible parts made of cast iron

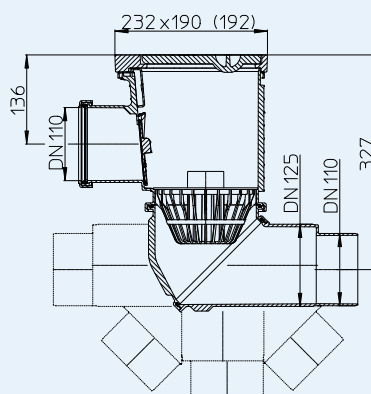
Data

Capacity	DN100: 10l/s DN125: 11l/s
Material	HL600NHO: PP HL600NGHO: PP/Guss
Inlet	DN110 socket
Outlet	DN110 or DN125, horizontally and vertically adjustable from 0° to 90°
Trap	Frost proofed flap with rubber gasket
Standard	DIN 12056, Önorm B 2501
Recommended for	Connection of downpipe to sewer behind a curtain wall
Including	Leaf catcher with overflow
Add. information	Suitable for outdoor

HL600NHO



HL600NGHO



HL600NHO HL600NGHO

HL0600N.2E



HL0600N.4E



HL0600N.3E

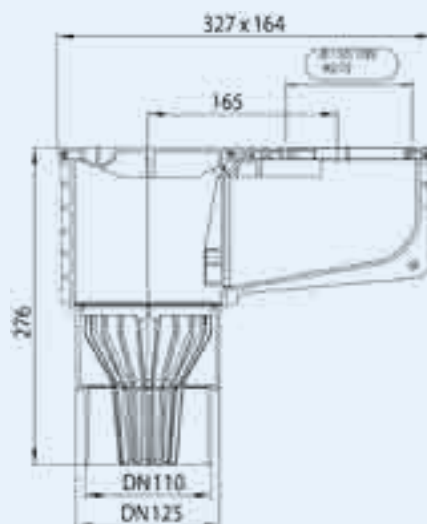


HL-No	Dimension	Surface	Weight	EAN	Piece/package
600NHO	DN110/125	PP	1556 g		1
600NGHO	DN110/125	Guss	6400 g		1

HL660/2, HL660/2-80 Rain hopper HL660E Rain hopper

Data

Capacity	6,6 l/s
Material	PP (Polipropilen)
Connection dimension	DN110/125
Outlet	Vertical
Stench trap	Frostproof flap
Standard	DIN 19560
Recommended for	Connection between rainwater downpipe and sewage pipe
Including	Leaf catcher, cleaning flap, adapter rings for downpipes HL660/2: Ø 75, 90, 100, 110 mm HL660/2-80: Ø 80, 100, 110 mm HL660E adapter insert, Ø 75 - 120 mm (to be cut out)



HL660E



HL0600.10E

HL660/2-80



HL660/2



HL0600.1E



HL0600.02E



HL0600.4E



HL0600.3E



HL-No.	Dimension	Weight	EAN	Piece/package
660/2	DN110/125	800 g	+011902	1
660/2-80	DN110/125	800 g	+012626	1
660E	DN110/125	800 g	+029556	1